

5 Acres or Less, 10th Street and Winchester

This is an extremely high traffic location. Located on the northeast corner of 10th and Winchester, this site offers frontage along the 10th Street Professional Corridor, and also along Winchester Drive. Located directly behind Walmart.

Location: Northeast corner of 10th and Winchester

10th Street Frontage: 300'

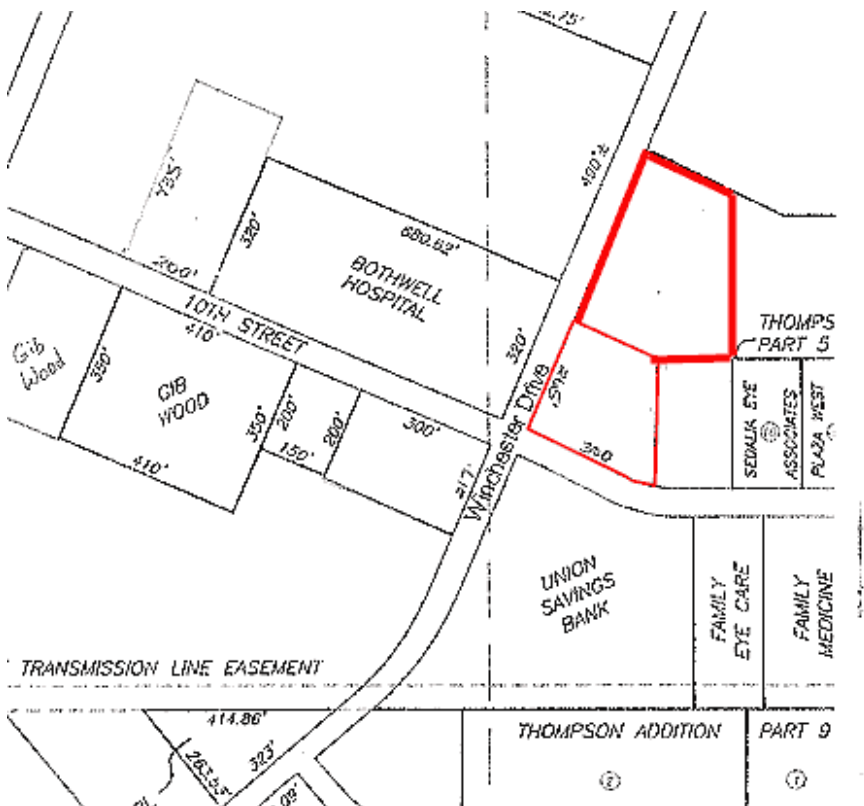
Winchester Drive Frontage: 265' to 600'

Neighbors: Walmart, Bothwell Hospital Diagnostic Center, Social Security Office,

Infrastructure: All city utilities available

Zoning: C-1 Commercial

Can be subdivided: Yes



Contact:

**Dianne Simon, Vice President
Thompson Hills Investment Corp.
906 Thompson Blvd
PO Box 1546
Sedalia, MO 65302-1546
(660) 826-4800
(660) 826-5255 (fax)**